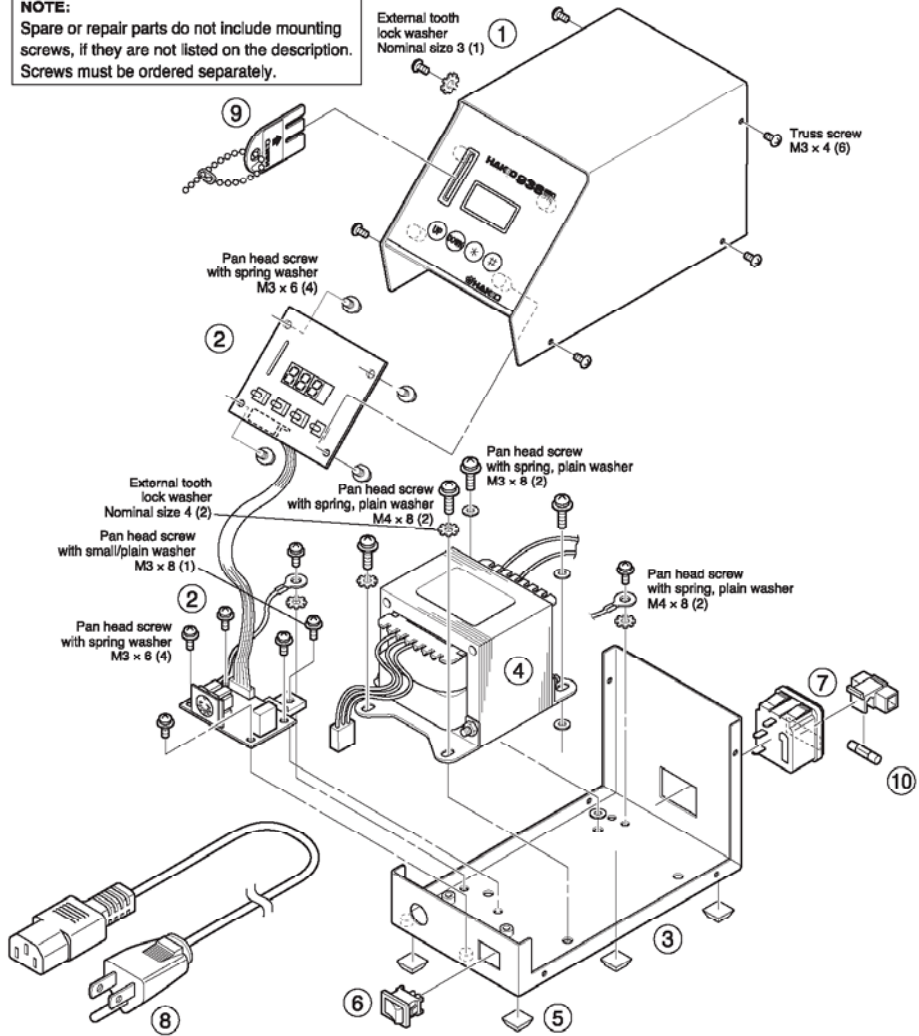


# HAKKO 938 SOLDERING STATION

## Maintenance & Checking

### 1. PARTS LIST

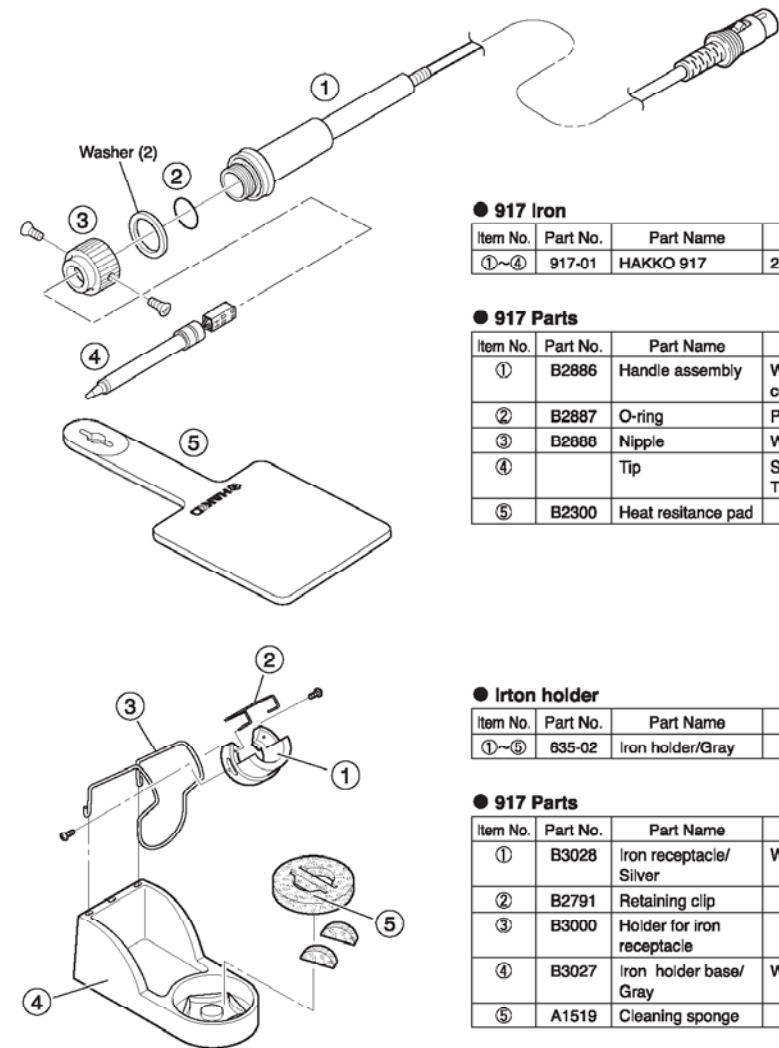
**NOTE:**  
Spare or repair parts do not include mounting screws, if they are not listed on the description. Screws must be ordered separately.



**● HAKKO 938 Station**

Item No.	Part No.	Part Name	Specifications
①	B2882	Cover	with membrane sheet
②	B2883	P.W.B	for temperature control & connector
③	B2884	Chassis	
④	B2885	Transformer	100V
	B2890	Transformer	110V
	B2891	Transformer	220V
	B2892	Transformer	230V
	B2903	Transformer	240V
⑤	B2748	Rubber foot	Set of 4.
⑥	B1084	Power switch	
⑦	B2384	Power receptacle	

Item No.	Part No.	Part Name	Specifications
⑧	B2387	Power cord, 3 wired cord & American plug	100V
	B2419	Power cord, 3 wired cord & American plug	100 – 110V
	B2421	Power cord, 3 wired cord but no plug	220 – 240V
	B2422	Power cord, 3 wired cord & BS plug	India
	B2424	Power cord, 3 wired cord & European plug	220V KTL, 230V CE
	B2425	Power cord, 3 wired cord & BS plug	230V CE
⑨	B2426	Power cord, 3 wired cord & Australian plug	
	B2436	Power cord, 3 wired cord & China plug	China
	B2388	Control card	
⑩	B2761	Fuse, 250V – 3A	100 – 110V
	B2404	Fuse, 250V – 1A	220 – 240V



**● 917 Iron**

Item No.	Part No.	Part Name	Specifications
①~④	917-01	HAKKO 917	27V – 90W

**● 917 Parts**

Item No.	Part No.	Part Name	Specifications
①	B2886	Handle assembly	With connecting cord
②	B2887	O-ring	P-10 Viton
③	B2900	Nipple	With screws
④		Tip	See section '3. TIP STYLES'
⑤	B2300	Heat resistance pad	

**● Iron holder**

Item No.	Part No.	Part Name	Specifications
①~⑤	635-02	Iron holder/Gray	

**● 917 Parts**

Item No.	Part No.	Part Name	Specifications
①	B3028	Iron receptacle/ Silver	With two screws
②	B2791	Retaining clip	
③	B3000	Holder for iron receptacle	
④	B3027	Iron holder base/ Gray	With rubber foot
⑤	A1519	Cleaning sponge	

### 2. TROUBLE SHOOTING GUIDE

**⚠ WARNING**

• Before checking the inside of the HAKKO 938 or replacing parts, be sure to disconnect the power plug. Failure to do so may result in electric shock.

● The unit does not operate when the power switch is turned on.

- CHECK:** Is the power cord and/or the connection plug disconnected?  
**ACTION:** Connect it.
- CHECK:** Is the fuse blown?  
**ACTION:** Investigate why the fuse blew and then replace the fuse. If the cause can not be determined, replace the fuse. If the fuse blows again, send the unit in for repair.

● The tip does not heat up.  
• The sensor error [5-E] is displayed.

- CHECK:** Is the power cord and/or the connection plug disconnected?  
**ACTION:** Connect it.
- CHECK:** Is the tip inserted properly?  
**ACTION:** Insert the tip completely.
- CHECK:** Is the connection cord and/or the heater/sensor broken?  
**ACTION:** See the appropriate section of this manual regarding how to check the connection cord and/or the heater/sensor for breakage.

● Solder does not wet the tip.

- CHECK:** Is the tip temperature too high?  
**ACTION:** Set the appropriate temperature.
- CHECK:** Is the tip contaminated with oxide?  
**ACTION:** Remove the oxide (see "8. Maintenance" of the Instruction Manual).

● The tip temperature is too high.

- CHECK:** Is the connection cord broken?  
**ACTION:** See "Checking the connection cord for breakage" on 8. Maintenance of the Instruction Manual.
- CHECK:** Is the entered offset value correct?  
**ACTION:** Enter the correct value.

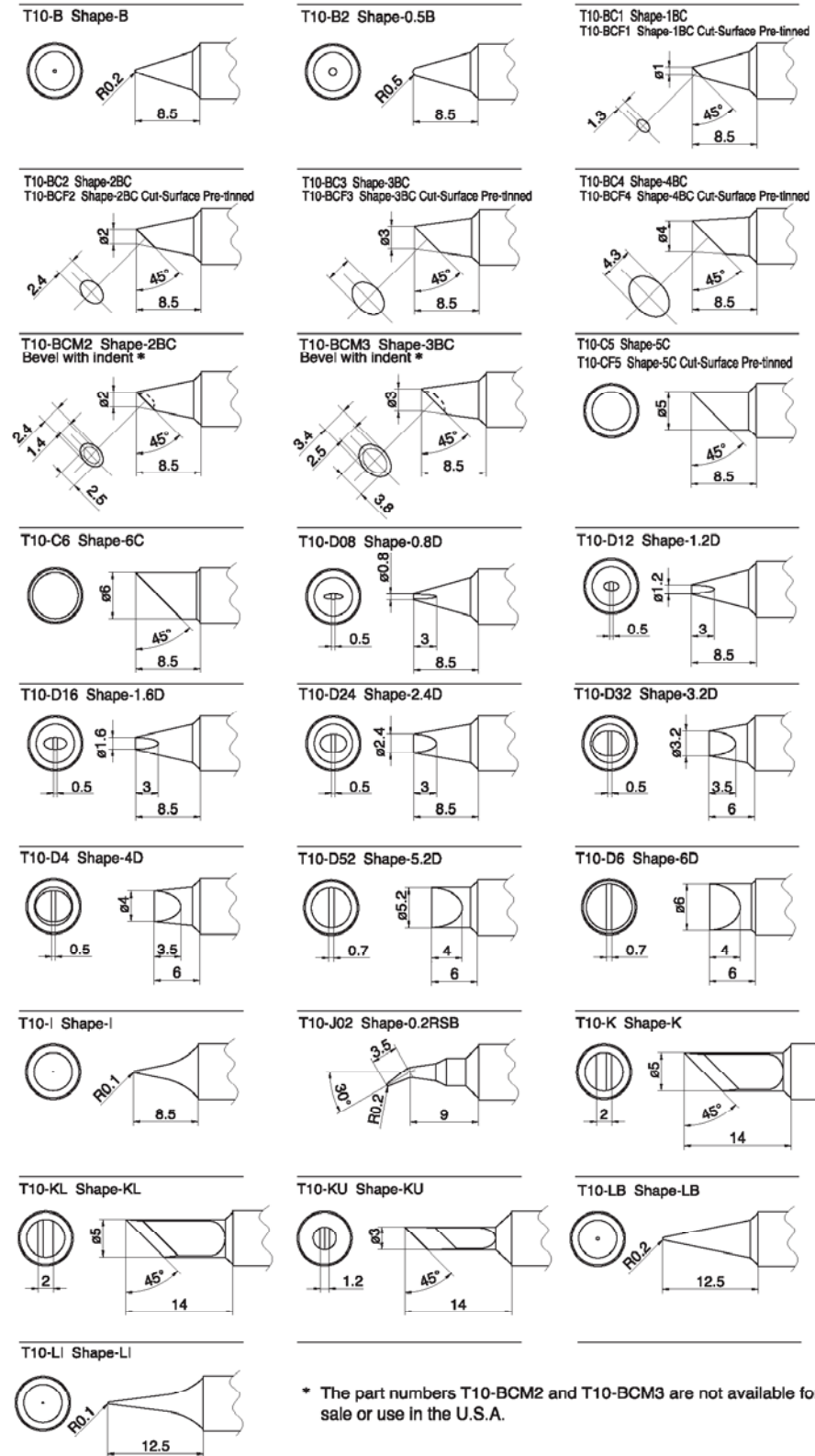
● The tip temperature is too low.

- CHECK:** Is the tip contaminated with oxide?  
**ACTION:** Remove the oxide (see "8. Maintenance" of the Instruction Manual).
- CHECK:** Is the entered offset value correct?  
**ACTION:** Enter the correct value.

● The low-temperature alarm tolerance error occurs frequently.

- CHECK:** Is the tip contaminated with oxide?  
**ACTION:** Remove the oxide (see "8. Maintenance" of the Instruction Manual).
- CHECK:** Is the entered offset value correct?  
**ACTION:** Enter the correct value.

### 3. TIP STYLES



\* The part numbers T10-BCM2 and T10-BCM3 are not available for sale or use in the U.S.A.

**HAKKO**  
HAKKO CORPORATION  
HEAD OFFICE  
TEL:+81-6-6561-3225 FAX:+81-6-6561-8466  
http://www.hakko.com E-mail:sales@hakko.com  
OVERSEAS AFFILIATES  
U.S.A.: AMERICAN HAKKO PRODUCTS, INC.  
TEL: (861) 294-0300 FAX: (861) 294-0306  
Toll Free (800)88-HAKKO  
http://www.hakko.com  
HONG KONG: HAKKO DEVELOPMENT CO., LTD.  
TEL: 2611-5588 FAX: 2580-0217  
http://www.hakko.com.hk  
E-mail:info@hakko.com.hk  
SINGAPORE: HAKKO PRODUCTS PTE., LTD.  
TEL: 6748-2277 FAX: 6744-0033  
http://www.hakko.com.sg  
E-mail:usa@hakko.com.sg

Please access to the following address for the other Sales affiliates.  
<http://www.hakko.com>